

TA215454

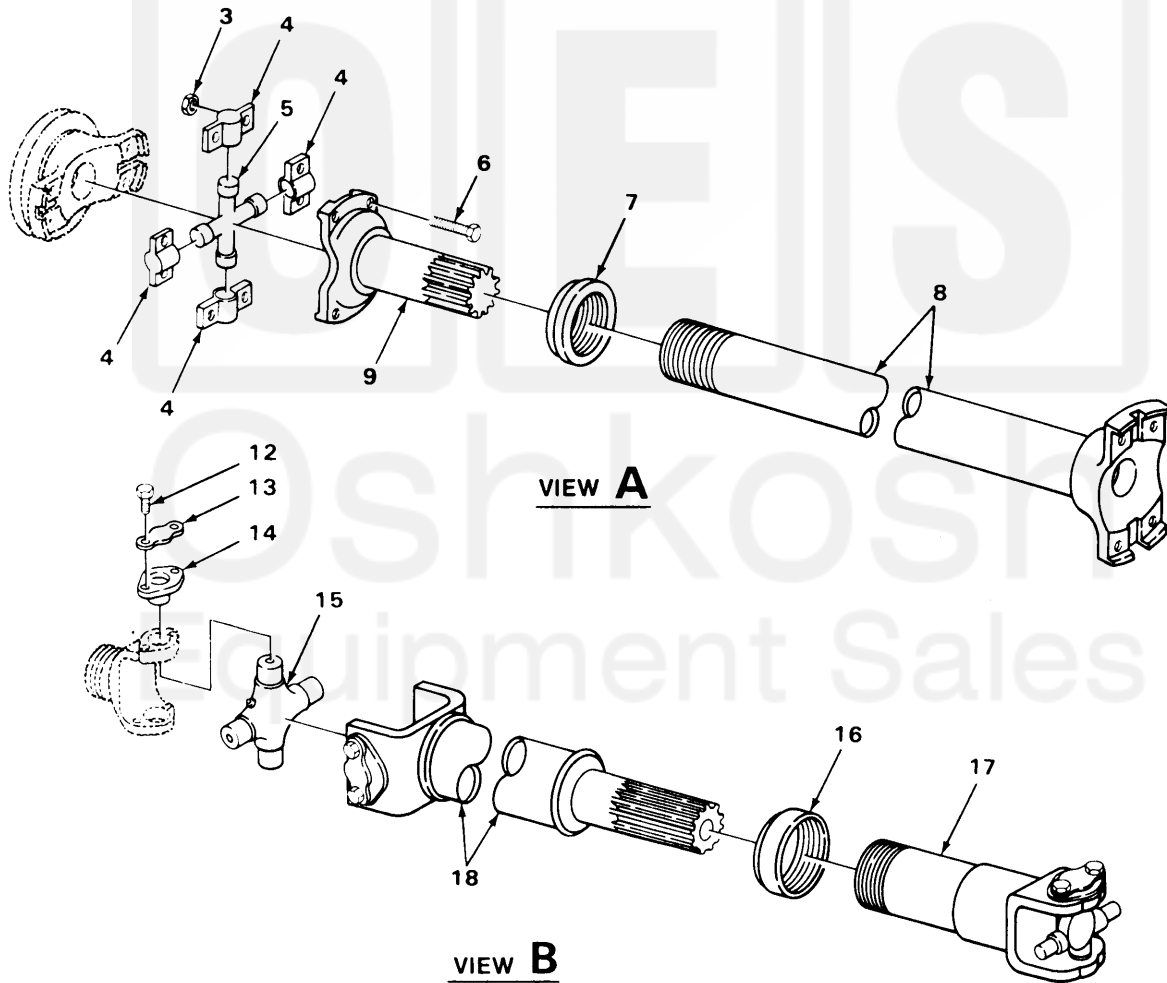
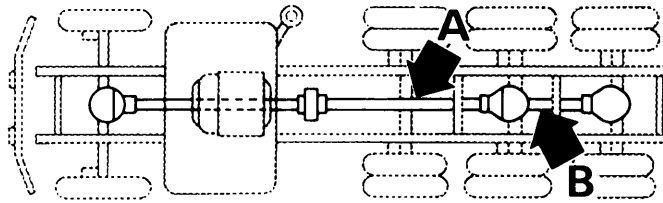
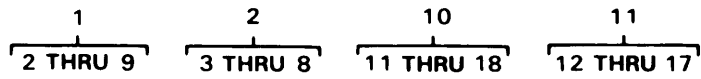
FIGURE 85. FRONT AND REAR PROPELLER SHAFTS (MODEL M915).

Current part is item (4,16) on diagram. Available at www.oshkoshequipment.com

SECTION (1)	II (2)		TM9-2320-273-24P (4)	(5)	(6)
ITEM NO	SMR CODE	FSCM	PART NUMBER	DESCRIPTION AND USABLE ON CODE (UOC)	QTY
				GROUP:09 PROPELLER AND PROPELLER SHAFTS GROUP:0900 PROPELLER SHAFTS	
				FIGURE 85. FRONT AND REAR PROPELLER SHAFTS (MODEL M915).	
1	PAOOO	78500	984-04-004-294	PROPELLER SHAFT WIT UOC:U21	1
2	PAOOO	78500	984-5844-367	.YOKE ASSEMBLY,SLIP UOC:U21	1
3	XAOZZ	78500	17NS40-42	.YOKE,SLIP UOC:U21	1
4	PAOZZ	78500	SERUR33-4	..SEAL UOC:U21	1
5	PAOZZ	78500	17N1-9A	..UNIVERSAL JOINT PART OF KIT P/N CP17N-37 UOC:U21	1
6	KFOZZ	78500	17N4-8A	..CUP,NEEDLE PART OF KIT P/N CP17N- 37 UOC:U21	4
7	PAOZZ	78500	LPHC39-3L	..LOCKING PLATE,NUT A PART OF KIT P/N CP17N-37 UOC:U21	4
8	PAOZZ	78500	CSH6-24-49C	..SCREW,CAP PART OF KIT P/N CP17N-37 UOC:U21	8
9	PAOZZ	78500	984-55-46786	.PROPELLER SHAFT WITH UNIVERSAL, PROPELLER SHAFT AND UNIVERSAL JOINTS UOC:U21	1
10	PAOZZ	78500	954-05-117-021	ASSY,PROPELLER SHAF UOC:U21	1
11	PAOOO	78500	954-58-446-78	.YOKE ASSEMBLY,SLIP UOC:U21	1
12	XAOZZ	78500	72NLS32-81	.YOKE,SLIP UOC:U21	1
13	PAOZZ	78500	SE-RUR25-1	..CAP,DUST,PROPELLER UOC:U21	1
14	PAOZZ	78500	CSH7-20-14	..SCREW PART OF KIT P/N CP72N-113 UOC:U21	8
15	PAOZZ	78500	WALM7-2	..WASHER,LOCK PART OF KIT P/N CP72N- 113 UOC:U21	1
16	KFOZZ	78500	72N1-20A	..CROSS,CENTER PART OF KIT P/N CP72N- 113 UOC:U21	1
17	KFOZZ	78500	72N4-15A	..CUP,NEEDLE PART OF KIT P/N CP72N- 113 UOC:U21	4
18	PAOZZ	78500	954-55-117-021	.PROPELLER SHAFT, FROM WITH UNIVERSAL JOINTS UOC:U21	1

END OF FIGURE

Current part is item (4,16) on diagram. Available at www.oshkoshequipment.com



TA215458

FIGURE 87. PROPELLER SHAFTS TO REAR AXLE (MODELS M916, M917, M918, M919 AND M920).

Current part is item (4,16) on diagram. Available at www.oshkoshequipment.com

SECTION (1)	II (2)	TM9-2320-273-24P (3)	(4)	(5)	(6)
ITEM NO	SMR CODE	FSCM	PART NUMBER	DESCRIPTION AND USABLE ON CODE (UOC)	QTY
GROUP:0900 PROPELLER SHAFTS					
FIGURE 87. PROPELLER SHAFTS TO REAR AXLE (MODELS M916, M917, M918, M919 AND M920).					
1	PAOOO	78500	96004853124	ASSY,RPOPELLER SHAF UOC:U22,U24	1
1	PAOOO	78500	96004853374	ASSY,PROPELLER SHAF UOC:U23,U25,U26	1
2	PAOOO	78500	9605844424	.YOKE ASSEMBLY,SLIP UOC:U22,U24	1
2	PAOOO	78500	9605744424	.YOKE ASSEMBLY,SLIP UOC:U22,U25,U26	1
3	PAOZZ	78500	NU-E18-20-8	.NUT,SELF-LOCKING,HE UOC:U22,U23,U24,U25,U26	8
4	KFOZZ	78500	92N4-15A	.CUP,NEEDLE PART OF KIT P/N CP92N-70 UOC:U22,U23,U24,U25,U26	4
5	KFOZZ	78500	92N1-14A	.CROSS,CENTER PART OF KIT P/N CP92N-70 UOC:U22,U23,U24,U25,U26	1
6	PAOZZ	78500	CSH8-20-20	.SCREW,CAP,HEXAGON PART OF KIT P/N CP92N-70 UOC:U22,U23,U24,U25,U26	8
7	PAOZZ	78500	SE-RUR-40-3	.CAP,DUST,PROPELLER UOC:U22,U23,U24,U25,U26	1
8	XAOZZ	78500	92NLS48-47	.YOKE,SLIP UOC:U22,U23,U24,U25,U26	1
9	PAOZZ	78500	960-55-46-793	.PROPELLER SHAFT UOC:U22,U24	1
9	PAOZZ	34623	MA250A-21005	.PROPELLER SHAFT UOC:U23,U25,U26	1
10	PAOOO	78500	984-05-018-025	ASSY,PROPELLER SHAF UOC:U22,U23,U24,U25,U26	1
11	PAOZZ	78500	984-58-444-09	.YOKE ASSEMBLY,SLOP UOC:U22,U23,U24,U25,U26	1
12	PAOZZ	78500	CSH6-24-49C	.SCREW, CAP PART OF KIT P/N CP17N-37 UOC:U22,U23,U24,U25,U26	8
13	PAOZZ	78500	LP-HC39-3	.PLATE,RETAINING,SHA PART OF KIT P/N CP17N-37 UOC:U22,U23,U24,U25,U26	4
14	KFOZZ	78500	17N4-8A	.CUP,NEEDLE PART OF KIT P/N CP17N-37 UOC:U22,U23,U24,U25,U26	4
15	KFOZZ	78500	17N1-9A	.UNIVERSAL JOINT PART OF KIT P/N CP17N-37 UOC:U22,U23,U24,U25,U26	1
16	PAOZZ	78500	SERUR33-4	.SEAL UOC:U22,U23,U24,U25,U26	1
17	XAOZZ	78500	17NLS40-72	.YOKE,SLIP UOC:U22,U23,U24,U25,U26	1

Current part is item (4,16) on diagram. Available at www.oshkoshequipment.com